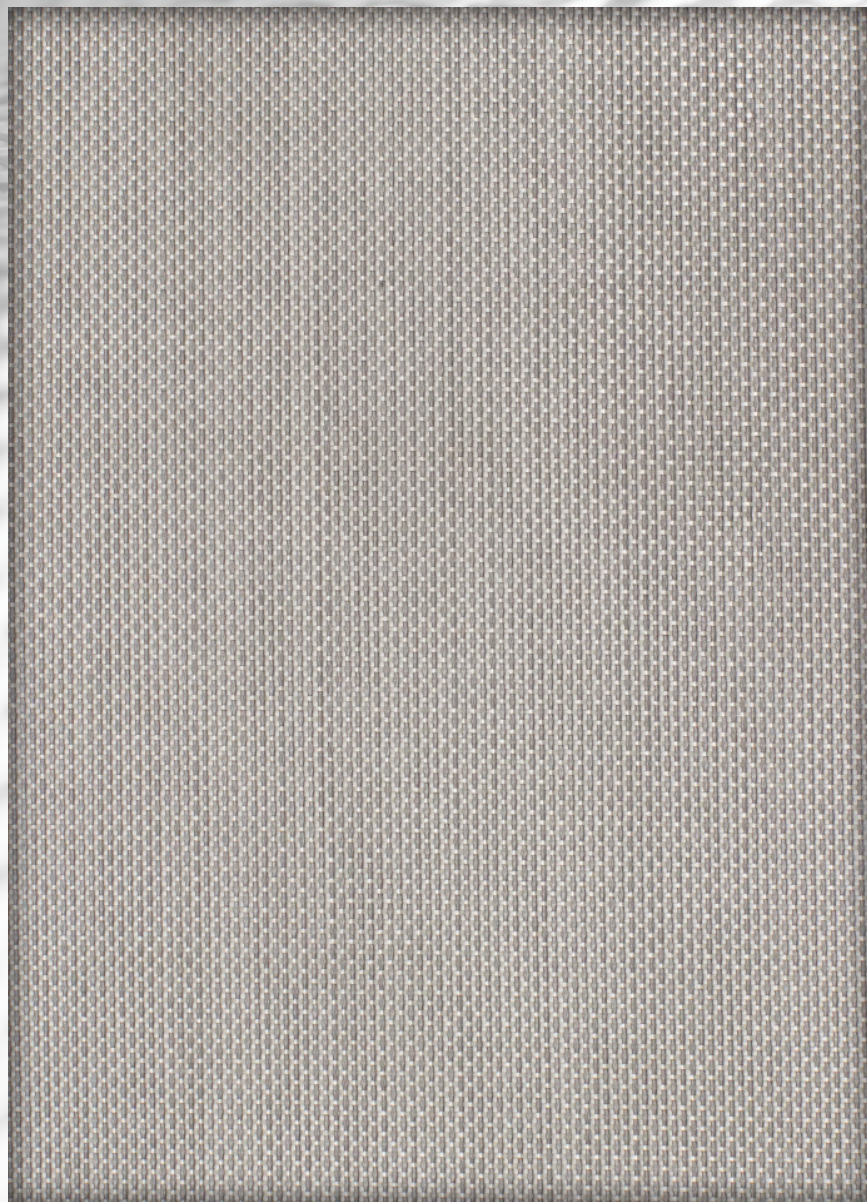




TEXTILENE[®]
By TWITCHELL
METALLICS



Due to the technical limitations of digital cameras and inconsistencies of display monitors, the characteristics and colors of the fabrics seen on your screen may be slightly different than the actual product.

TTP TEXTILENE[®] Metallics are constructed utilizing the same woven PVC coated polyester yarns that have made the Textilene[®] brand world renown. The distinctive pearlescent appearance of the TEXTILENE[®] Metallics was engineered for a multitude of applications including indoor and outdoor seating, marine cushions, or just about anywhere a unique look is desired. Proven TTP durability and versatility ensure that TEXTILENE[®] Metallics is not just a pretty fabric.

Specifications

REACH Compliant - Regulated by Registration, Evaluation, Authorization and Restriction of Chemicals. REACH places greater responsibility on industry to manage the risks that chemicals may pose to human health and the environment.

Children's Toy Act - Does not contain harmful phthalates listed under Section 108 of the Consumer Product Safety Improvement Act of 2008 (CPSIA).

Environmental Certification - GREENGUARD gold certified. Acceptable for use in environments such as schools and healthcare facilities. Complies with requirements of the State of California's Department of Public Health "Standard Method for Testing and Evaluation of Volatile Organic Chemical Emissions from Indoor Sources Using Environmental Chambers, Version 1.1 (2010)" (also known as California Section 01350).

RoHS Compliant - Free of Lead (Pb), Cadmium (Cd), Mercury (Hg), Hexavalent chromium (Hex-Cr), Polybrominated biphenyls (PBB), and Polybrominated diphenyl ethers (PBDE).

Bacteria and Fungal Resistance - Passes ASTM E 2180, ASTM G21. Includes specially formulated antimicrobial.



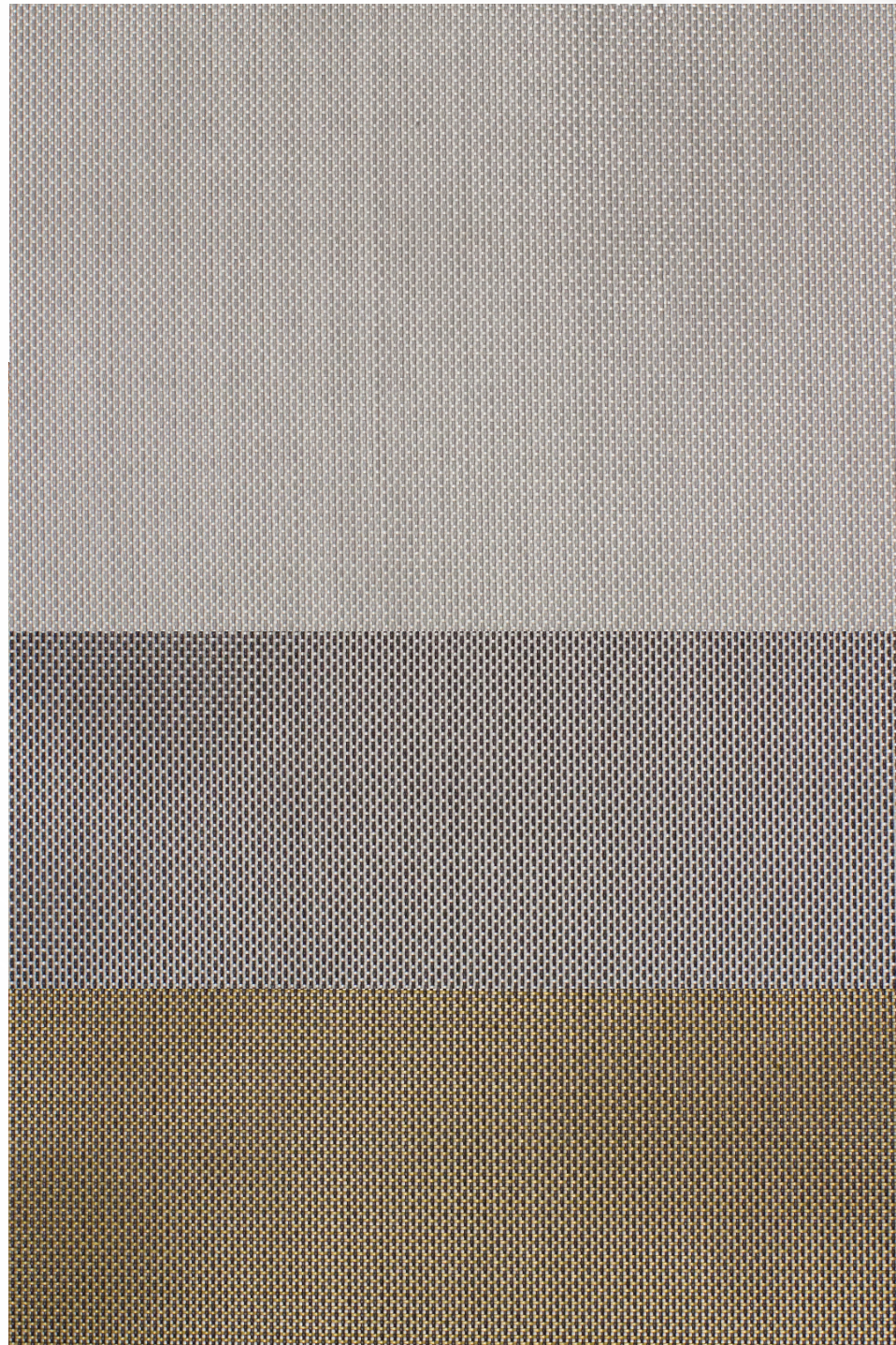
Technical Data

Item Number: T91D9T

Product Description: A woven fabric using .025" diameter vinyl coated 1000 denier polyester core yarns woven in the warp and fill.

Attribute	ASTM	Warp	Fill	Typical
Construction, end/inch	D3775-17	16.0 ± 0.5	17.0 ± 0.5	
Weight, oz/yd ²	D3775-17			14.9
Tensile Strength (grab), lbf	D5034-09	517.7	599.3	
Tensile Strength (strip), lbf	D5035-11	225.8	263.5	
Tear Strength (trapezoidal), lbf	D5733	66.9	75.1	
Elongation, %	D5035-11	28.5	27.3	
Abrasion Resistance (CS10/500 cycles/ with no added weight)	D3884-09	No Exposure of Core Yarn		
Flammability Rating		CA TB 117-2013		
Weatherability, 1200 hours	G154-16	Trace Discoloration		
Mildew Resistance	G21-13	No Growth		
Thickness, inches	D1777-15			0.0295
The above results are a representation of real data from single test samples in our laboratory. Independent test results may vary. Presently no specification is incorporated.				

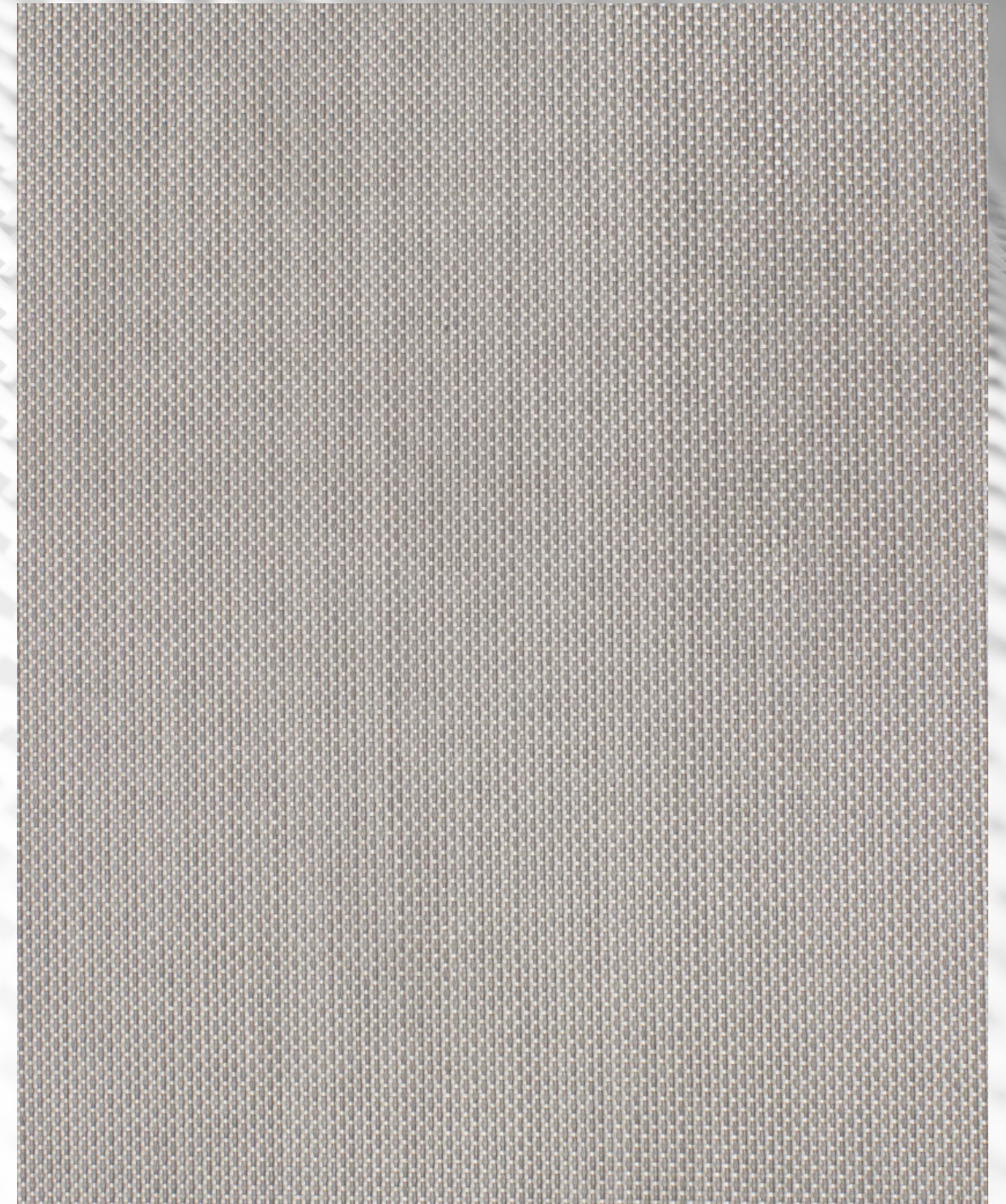
*Custom colors and widths available. Minimum order of 300 yds. Upcharges may apply. ** Available in 60 yld rolls.



Aluminum
T91D9T006 x 54"

Titanium
T91D9T003 x 54"

Brass
T91D9T007 x 54"



Aluminum
T91D9T006 x 54"

Due to the technical limitations of digital cameras and inconsistencies of display monitors, the characteristics and colors of the fabrics seen on your screen may be slightly different than the actual product.