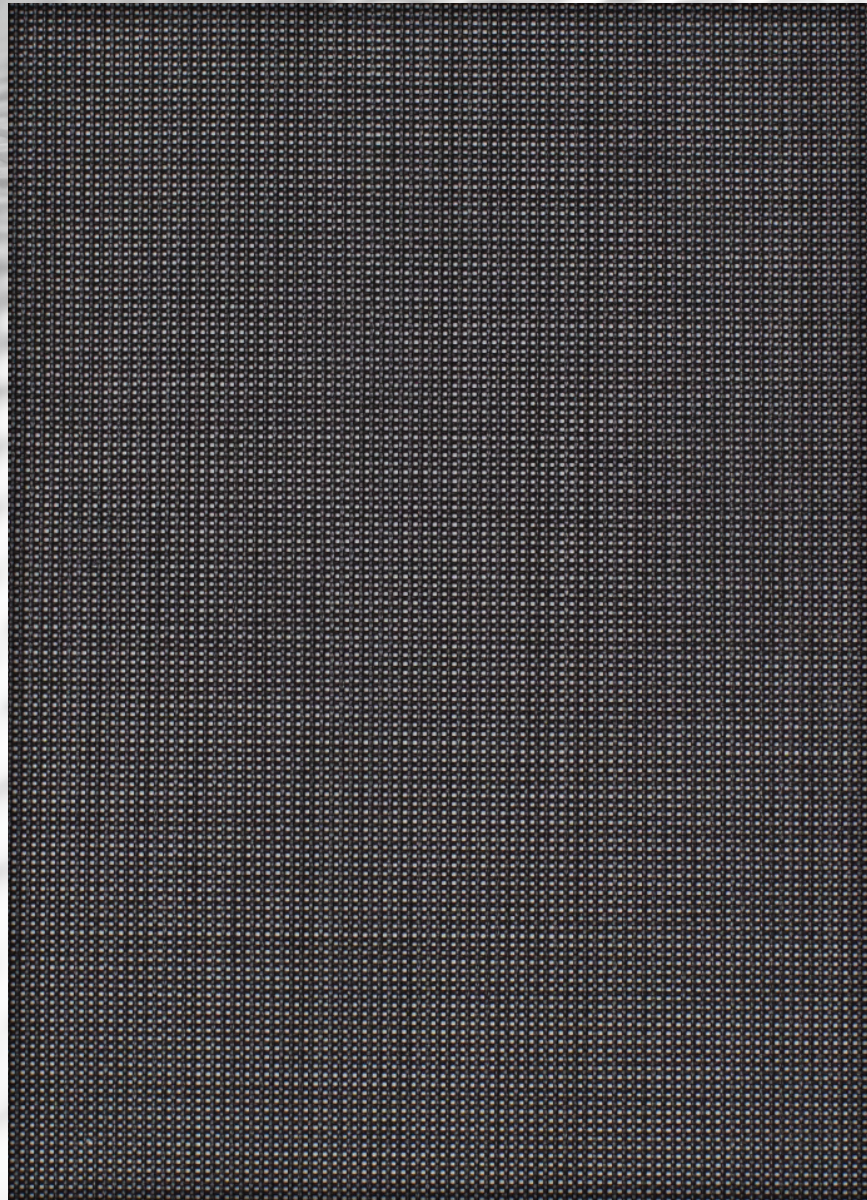




**TEXTILENE**<sup>®</sup>  
By TWITCHELL  
OPENMESH



Due to the technical limitations of digital cameras and inconsistencies of display monitors, the characteristics and colors of the fabrics seen on your screen may be slightly different than the actual product.

This breathable mesh fabric is made to stand the test of tough use yet attractive enough for any dinner setting by the pool. TTP's TEXTILENE<sup>®</sup> brand of woven PVC coated polyester fabric is known as an industry standard for versatility and strength.

## Specifications

**REACH Compliant** - Regulated by Registration, Evaluation, Authorization and Restriction of Chemicals. REACH places greater responsibility on industry to manage the risks that chemicals may pose to human health and the environment.

**Children's Toy Act** - Does not contain harmful phthalates listed under Section 108 of the Consumer Product Safety Improvement Act of 2008 (CPSIA).

**Environmental Certification** - GREENGUARD gold certified. Acceptable for use in environments such as schools and healthcare facilities. Complies with requirements of the State of California's Department of Public Health "Standard Method for Testing and Evaluation of Volatile Organic Chemical Emissions from Indoor Sources Using Environmental Chambers, Version 1.1 (2010)" (also known as California Section 01350).

**RoHS Compliant** - Free of Lead (Pb), Cadmium (Cd), Mercury (Hg), Hexavalent chromium (Hex-Cr), Polybrominated biphenyls (PBB), and Polybrominated diphenyl ethers (PBDE).

**Bacteria and Fungal Resistance** - Passes ASTM E 2180, ASTM G21. Includes specially formulated antimicrobial.



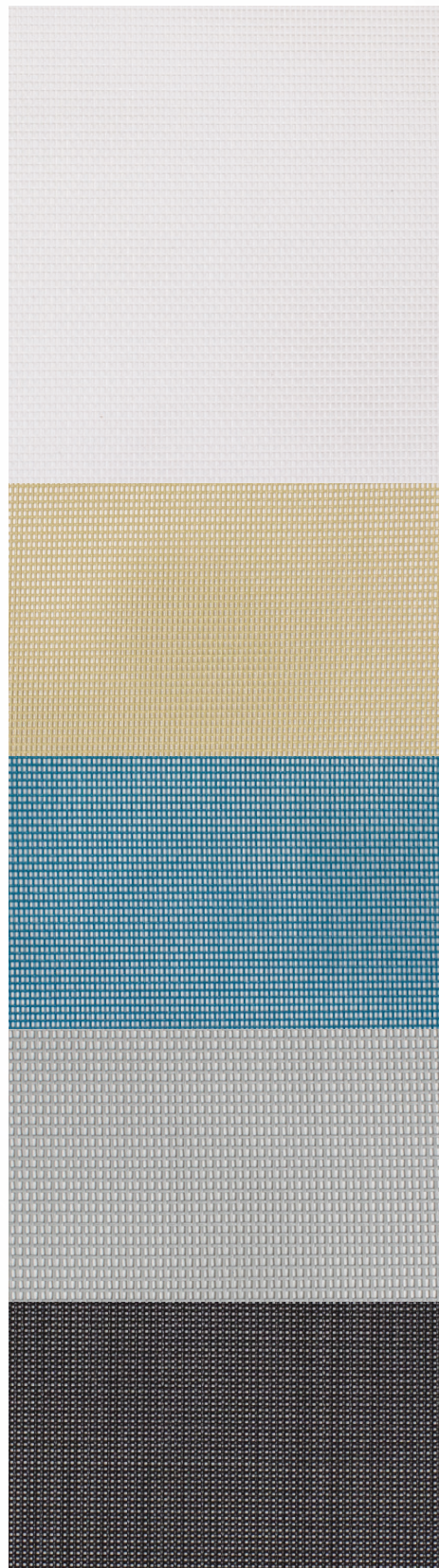
## Technical Data

**Item Number:** T13DLS

**Product Description:** A woven fabric using .025" diameter vinyl coated 1000 denier polyester core yarns woven in the warp and fill.

Attribute	ASTM	Warp	Fill	Typical
Weight, oz/yd <sup>2</sup>	D3775-17			10.3
Tensile Strength (grab), lbf	D5034-09	424.1	325.2	
Tensile Strength (strip), lbf	D5035-11	220.1	144.2	
Tear Strength (trapezoidal), lbf	D5733	94.2	62.6	
Elongation, %	D5035-11	15.1	13.7	
Abrasion Resistance <small>(CS10/500 cycles/ with no added weight)</small>	D3884-09	No Exposure of Core Yarn		
Flammability Rating		CA TB 117-2013		
Weatherability, 1200 hours	G154-16	Trace Discoloration		
Mildew Resistance	G21-13	No Growth		
Thickness, inches	D1777-15			0.0295
The above results are a representation of real data from single test samples in our laboratory. Independent test results may vary. Presently no specification is incorporated.				

\*Custom colors and widths available. Minimum order of 300 yds. Upcharges may apply. \*\* Available in 60 yld rolls.



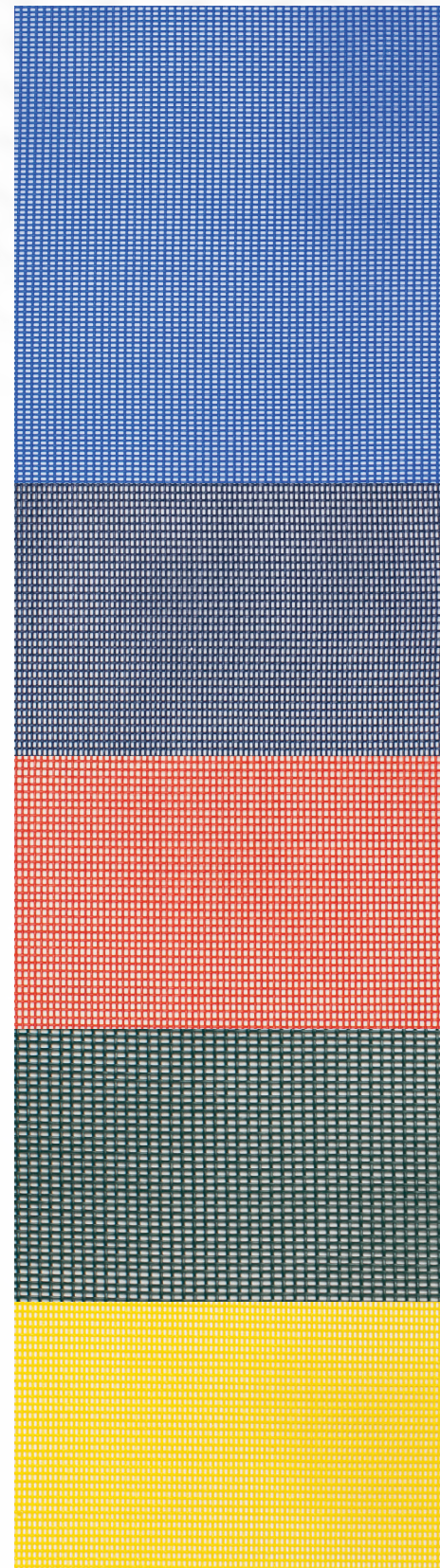
White  
T13DLS315 x 54"

Driftwood  
T13DLS365 x 54"

Mayan Teal  
T13DLS379 x 54"

Dove Grey  
T13DLS302 x 54"

Black  
T13DLS336 x 54"



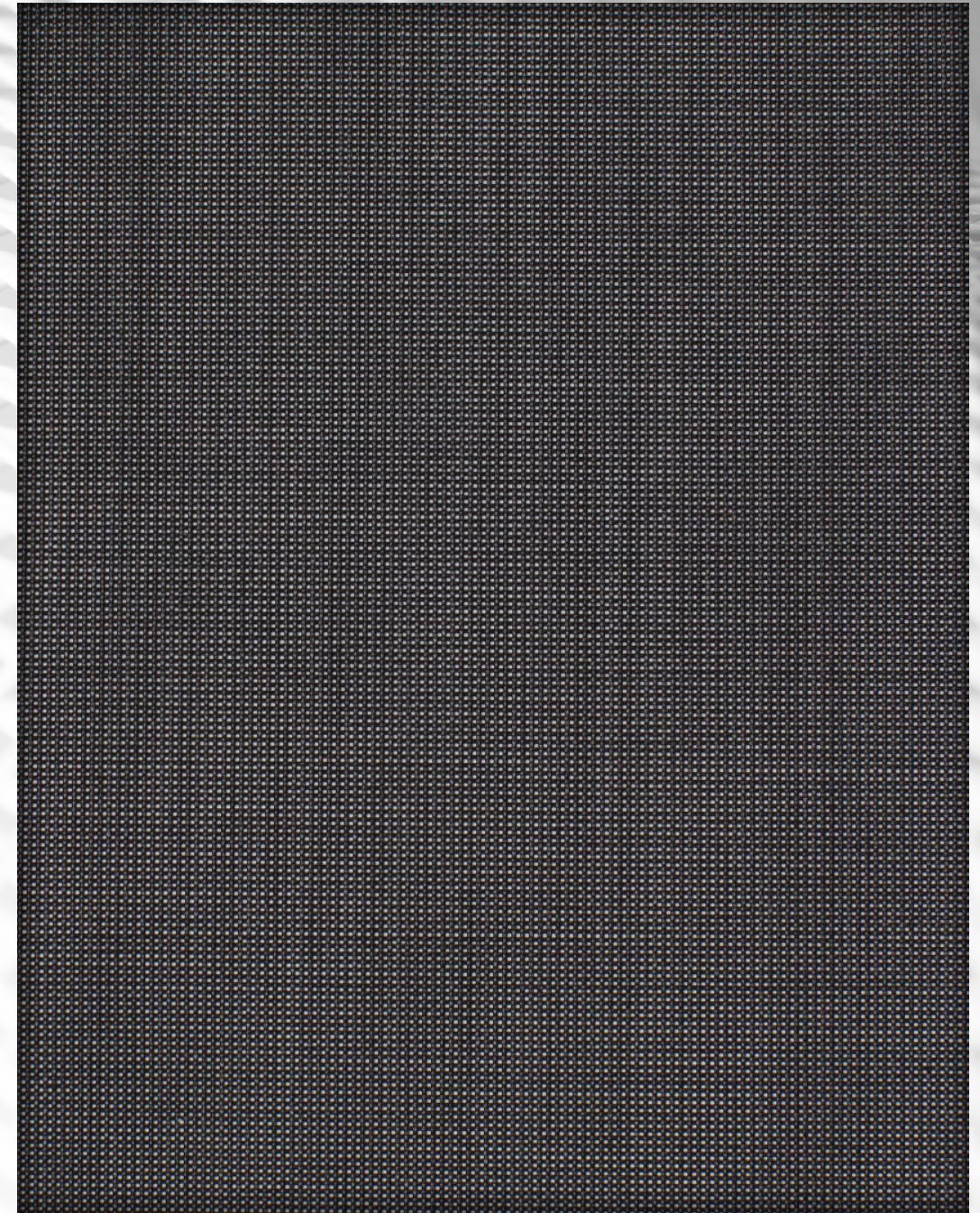
Royal Blue  
T13DLS305 x 54"

Dark Blue  
T13DLS378 x 54"

Red  
T13DLS393 x 54"

Forest  
T13DLS301 x 54"

Yellow  
T13DLS334 x 54"



Black  
T13DLS336 x 54"

Due to the technical limitations of digital cameras and inconsistencies of display monitors, the characteristics and colors of the fabrics seen on your screen may be slightly different than the actual product.